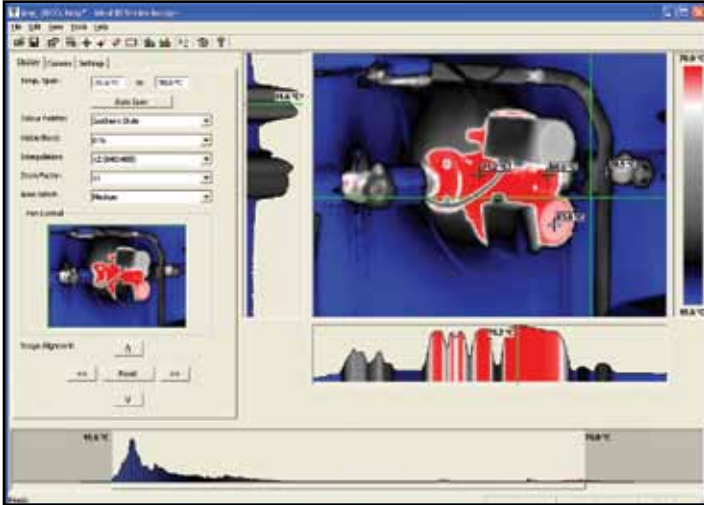


Accessories



ThermalVision™ PC Software Included

Easy-to-use software allows image download to PC for analysis.

Features

- View, edit and analyze images
- Automatic report generating capabilities
- Disk also includes user manual



61-846

Accessories

Includes	61-844	61-846
Removable Battery	—	61-846BAT
USB Cable	61-844USB	61-844USB
Camera Handle	61-844HAN	—
Carrying Case	61-844CC	61-844CC
Power Supply	61-844PS	61-846PS
ThermalVision™ Software	61-844SW	61-846SW
Optional	61-844	61-846
Light Shade	61-844LS	61-844LS
Car Charger	61-844CAR	61-846CAR
Desktop Charger	—	61-846DT
Hard Transport Case	61-846HC	61-846HC

**For Level I Certified Infrared Training Information Visit:
www.idealheatseeker.com**

IDEAL INDUSTRIES, INC.

Becker Place, Sycamore, IL 60178, USA / 815-895-5181 • 800-435-0705 in USA / Technical Hotline: 877-201-9005

International offices: Australia • Brazil • Canada • China • Germany • Mexico • Puerto Rico • UK

For complete sales office contact information, visit us at:

www.idealindustries.com

HeatSeeker® Thermal Imagers



- *Troubleshoot potential problems quickly*
- *Auto hot/cold tracker*
- *Image blending of thermal and digital*
- *Picture-in-picture*
- *Large widescreen display*
- *Mark images with text and voice annotation*
- *Sequence image recording*



Replaceable battery allows for continuous use on the job.

HeatSeeker® Thermal Imagers



Troubleshoot and identify potential problems before they happen with the **IDEAL HeatSeeker® Thermal Imagers**. What makes HeatSeeker® so useful are the dual cursors that instantly locate the hottest and coldest temperatures on a live screen, and the camera's ability to blend a thermal image on top of a digital image for easy on-the-job decision making. The HeatSeeker® Thermal Imager's easy set-up and operation make it a cost-effective tool for electrical service, industrial maintenance, building inspection and data center evaluation.



61-844



Removable handle

Features

- Blended thermal/digital image
- Picture-in-picture
- Hottest/coldest temperatures displayed instantly on live screen
- Mark images with text and voice annotation
- Sequence image recording up to every hour or by alarm settings
- Fully radiometric and temperature measurements can be made over entire image
- IP54 rated to resist dust and water
- Withstands a six foot (2m) drop
- Class II Laser
- Built-in LED illuminator
- High and low temperature alarms
- Adjustable emissivity for maximum accuracy
- Accuracy of +/- 2°C or ±2%
- Multilingual – Nine languages included
- Long battery life
- Tripod mountable
- Carrying case included
- ThermalVision™ PC software included
- Automatic report generator
- 2-year warranty

61-846



Class II Laser for view centering

Digital camera lens for visual image

LED light for working in dark environments

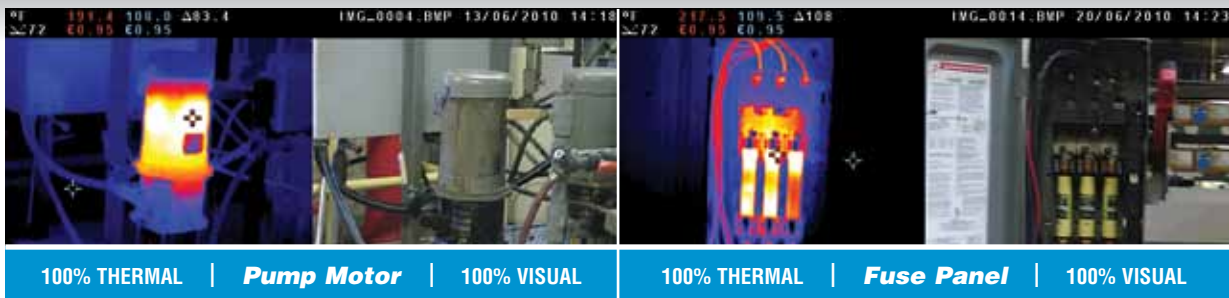
Removable battery



Side door allows quick access to headphone and USB connections, charging port and removable Micro SD card

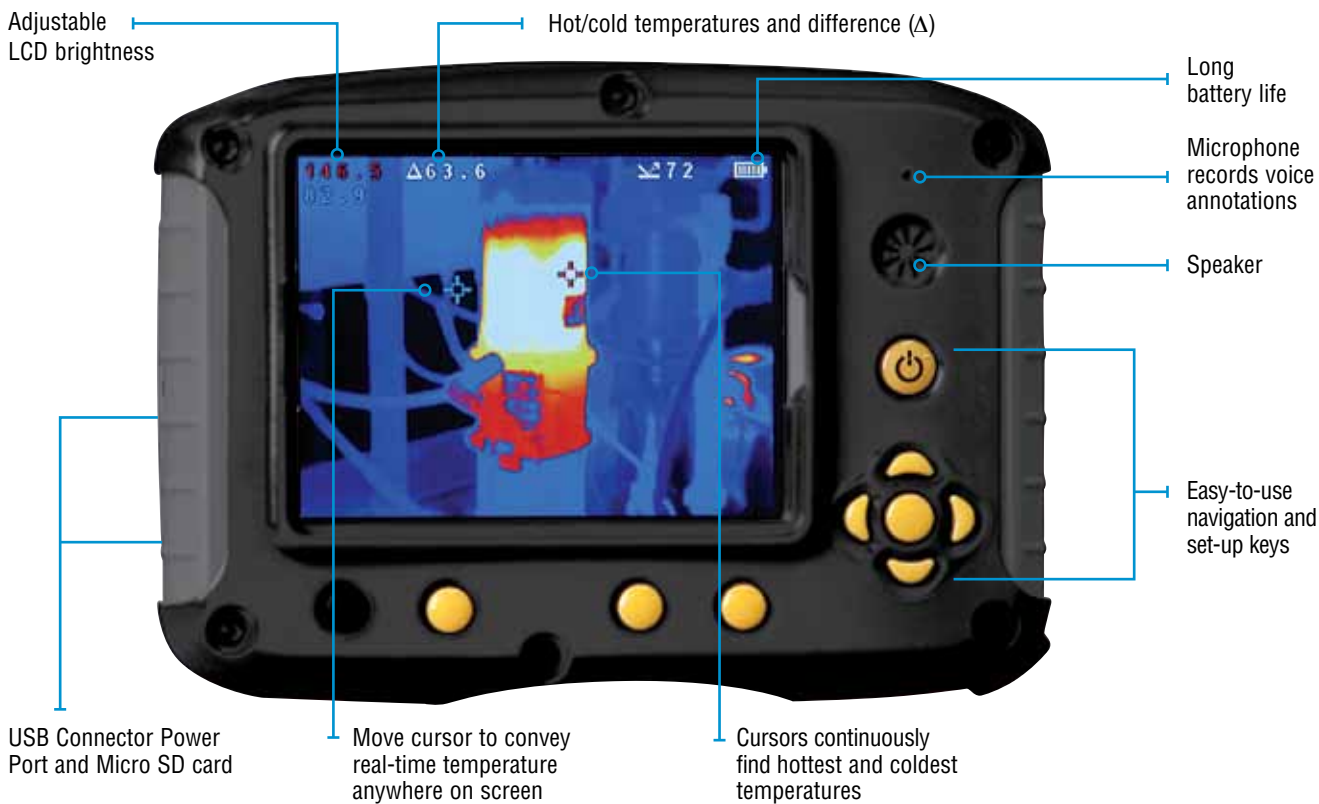
HeatSeeker® Thermal Imaging Camera Specifications

Feature	HeatSeeker® (61-844)	HeatSeeker® 160 (61-846)
Temperature Range	14°F to 662°F (-10°C to 350°C)	14°F to 482°F (-10°C to 250°C)
Temperature Accuracy	±2°C or ±2% of reading	
Emissivity Table	0.2 to 1.0 (adjustable)	
Cursors	Two-movable	Four-movable (with independent emissivity settings)
Image Storage (2 GB micro SD card)	2000 Images	
Field of View	20° x 20°	20° x 15°
Thermal Sensitivity	< 0.3°C at 30°C	< 0.08°C at 30°C
Focal Plane Array	2,209 pixels (47 x 47)	19,200 pixels (160 x 120)
Display	3.5" LCD	
Visible Light Camera Resolution	1.0 Megapixels	2.0 Megapixels
Spectral Range	8µm to 12µm	8µm to 14µm
Image Control	Eight color palettes (Ironbow, Rainbow, Isotherm, Hot Metal, High Contrast, Rainbow 16, Black Hot and White Hot)	
Focus	Manual	
Power	Internal rechargeable Li-ion battery (6 hours)	Field replaceable, rechargeable Li-ion battery (5 hours)



Adjustable Blended View for Ease of Use

The HeatSeeker® captures both a full infrared image and a digital photo. The thermal image can be overlaid on top of the digital image in various % blends for clarity.



HeatSeeker® provides real-time analysis and is ideal for:

Electrical Safety

- Identifies overloaded circuits, loose/corroded connections and failing breakers in electrical panels
- Identifies blown fuses, overloads, phase imbalance and harmonics problems
- Identifies hot spots from high resistance connections

Energy Efficiency

- Identifies inefficient heating and cooling transfer
- Identifies draft sources from missing insulation in rafters/walls/floors
- Identification of problem areas helps reduce heat gain/loss and carbon footprint

Building Maintenance

- Discovers sources of moisture in roofs and areas behind walls
- Checks air distribution for blockages in pipes, damaged duct work and insulation gaps
- Checks fluid distribution for stuck valves and burst pipes

Preventive Maintenance

- Identifies equipment efficiencies/inefficiencies
- Applications include motors, pumps, boilers, radiators, heaters, chillers and transformers

Data Center Thermal Mapping

- | | | | |
|--|---|---|--|
| <ul style="list-style-type: none"> ■ Cooling Systems and Heat Generating Equipment ■ Electrical Switchgear | <ul style="list-style-type: none"> ■ Motors and Motor Controls ■ HVAC Equipment ■ Uninterruptible Power Supplies (UPS) | <ul style="list-style-type: none"> ■ Automatic Transfer Switches (ATS) ■ Power Distribution Units (PDU) | <ul style="list-style-type: none"> ■ Batteries ■ Electrical Devices that Feed the Server Systems |
|--|---|---|--|